



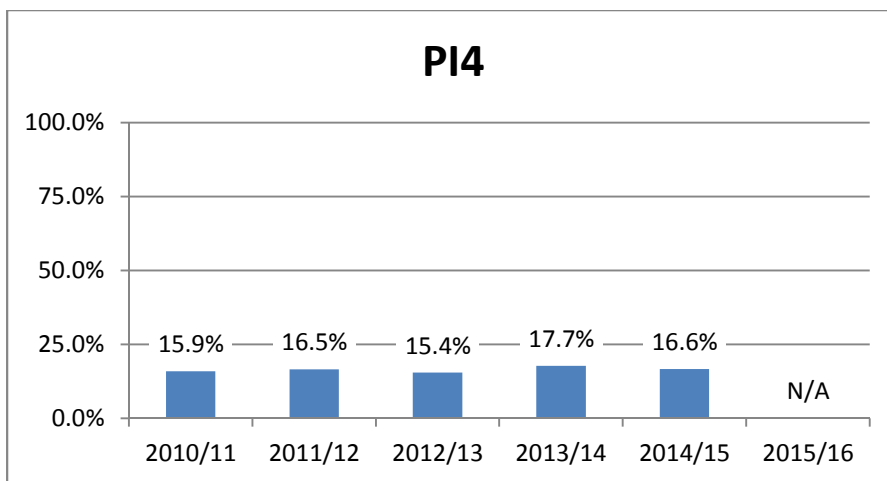
REPORT MARCH 2018

Family and Children's Services of Frontenac, Lennox and Addington

SAFETY OUTCOMES

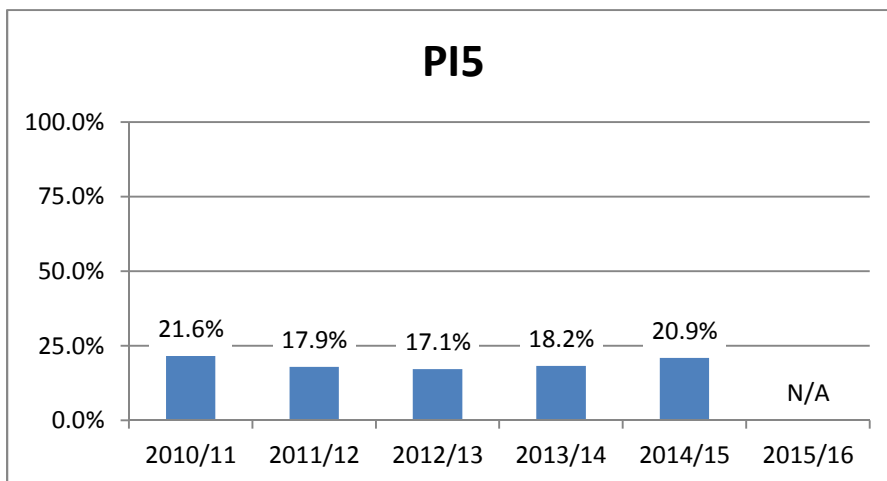
Recurrence of Child Protection Concerns in a Family after an Investigation

This measures the number of cases that were closed after an initial investigation but where the family subsequently needed to return to the child welfare system within 12 months after closure. Data suggest that the majority of families do not return for service within 12 months of service closure.



Recurrence of Child Protection Concerns in a Family after Ongoing Protection Services Were Provided

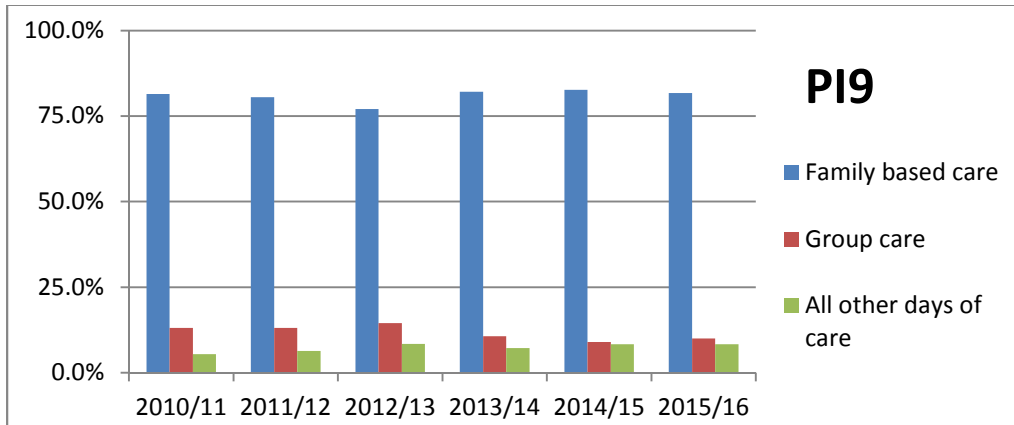
This measures the number of cases that were closed after protection issues were confirmed and services were provided and then subsequently the family needed to return to the system within 12 months of closure. The majority of families do not return for service within 12 months of service closure.



PERMANENCY

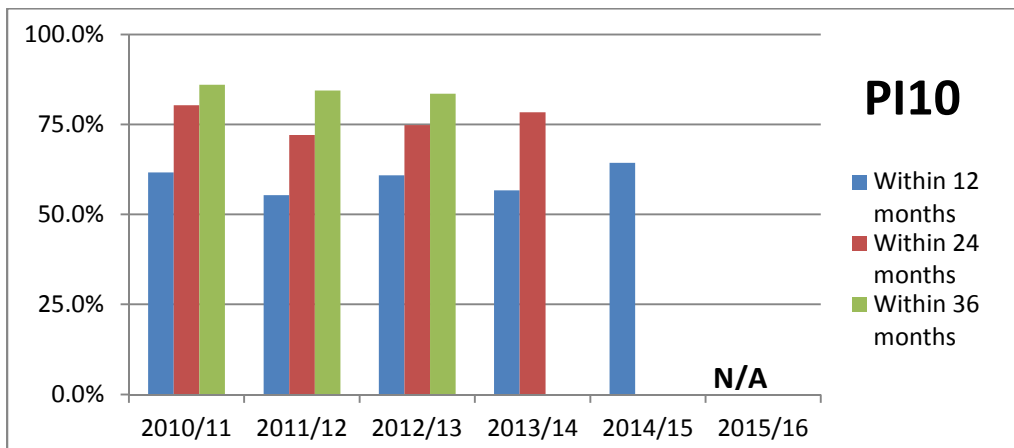
The Days of Care, by Placement Type

For all children admitted to the care of our Children's Aid Society, the days of Family-based care.



The Time to Permanency

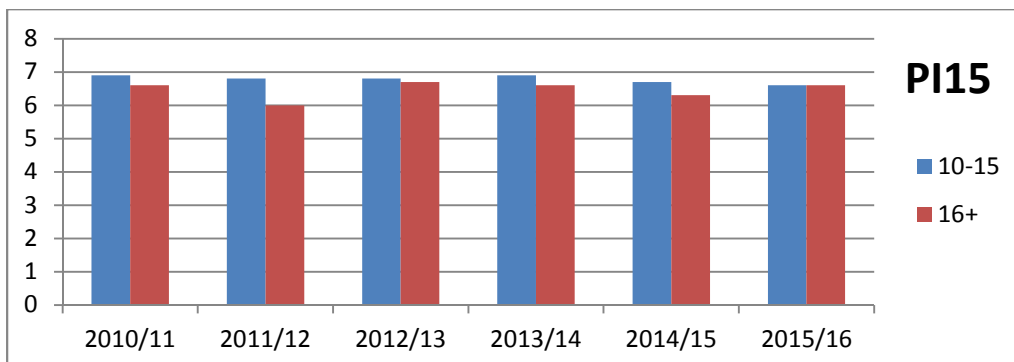
For all children admitted to the care of our Children's Aid Society during the fiscal year, the cumulative percentage discharged within a specific time period (i.e., 12 months, 24 months and 36 months since admission). Most children are discharged from care less than a year after admission



WELL-BEING

The Quality of the Caregiver and Youth Relationship

The average score for children in care (aged 10-15 and 16+) from a standard scale that measures a young person's perception of the quality of the relationship with his or her primary caregiver, such as a foster parent. The scale has four questions and uses a composite score with a minimum of 0, and a maximum of 8. Overall, the data show that the youth relationship with caregivers is mostly positive.





	2010/11	2011/12	2012/13	2013/14	2014/15	2015/16
PI 4: Recurrence of Protection Concerns in a Family after an Investigation	15.9%	16.5%	15.4%	17.7%	16.6%	N/A

	2010/11	2011/12	2012/13	2013/14	2014/15	2015/16
PI 5: Recurrence of Protection Concerns in a Family after Ongoing Protection Services were Provided	21.6%	17.9%	17.1%	18.2%	20.9%	N/A

		2010/11	2011/12	2012/13	2013/14	2014/15	2015/16
PI 9: Days of Care by Placement Type	Family based care	81.5%	80.5%	77.1%	82.1%	82.7%	81.7%
	Group care	13.1%	13.1%	14.5%	10.7%	9.0%	10.0%
	All other days of care	5.4%	6.4%	8.4%	7.2%	8.3%	8.3%

		2010/11	2011/12	2012/13	2013/14	2014/15	2015/16
PI 10: Time to Permanency	Within 12 months	61.7%	55.4%	60.9%	56.7%	64.3%	
	Within 24 months	80.3%	72.0%	74.8%	78.4%		
	Within 36 months	86.0%	84.4%	83.5%			

		2010/11	2011/12	2012/13	2013/14	2014/15	2015/16
PI 15: Quality of the Caregiver-Youth Relationship for Children in Care	10-15	6.9	6.8	6.8	6.9	6.7	6.6
	16+	6.6	6	6.7	6.6	6.3	6.6